



COMPANY PROFILE

2022 - 2023



CEO'S MESSAGE

Greetings

We firmly believe in combining Modern style with our Royal tradition. That's why our products are

"Inspired by Tradition"

We are committed & dedicated in providing the standards and acceptable products in all possible ways.

We have set new standards in the Tent & Shade industry and now we are looking for new challenges & greater achievements in year 2022.

INTRODUCTION

Bait Al Nokhada Tents & Fabric Shade Factory L.L.C is a leading manufacturer of Tents & Fabric Shades since 1997. The company is established by Mr. Abdullah Hassan & Mr. Abdullatef Almohdey in Abu Dhabi with an aim to provide the best quality tents & shades to clients with unique designs & high quality material.

By following innovations, forward thinking, and a commitment to deliver the best, The company has been in top listed in the relative field with manufacturing capacity of 3,00,000 Sqm production/year with the team of 500 people. With emphasis on sustainable development, we have allocated adequate financial resources for research and development in order to uphold our position as the undisputed leader.

Company has embraced the latest manufacturing technologies from France and Germany. Today, in various countries and regions around the world, We are spearheading a revolution of change in the industry. Understanding new generation demand, we have designed & developed some new products (Recently launched Mobile Caravan, Robus Tent) with modern technology to meet the new age expectations.

Now, We are setting our goals on the possibilities of tomorrow to invite every client to be our client .



VISION

Our vision is to increase the value of our company & our global portfolio of diversified brands by exceeding customer's expectations and achieving market leadership and operating excellence in every segment of our company.



MISSION

To build a international network of good services and resources of development communities with the purpose of retaining, attracting and expanding business and stimulating the local economy and expanding local traditional industry with the taste of modernization.



VALUES

We value high trust relationship with Retail & Corporate. We are working Domestic & internationally in a collaborative environment with the spirit of being honest, reliable, respectful, innovative & competent .



QUALITY ASSURANCE



We are assuring you world-class specifications or products, services and systems, to ensure quality, safety and efficiency certified by ISO 9001:2015, ISO 14001:2015 & ISO 45001:2018.



OBJECTIVES



The Major objective of the company is to become internationally provider - known brand.



Objective is to make sure that all the products are available with Latest technology & have a world class quality.



Productivity growth with Employee training, equipment maintenance and new equipment purchases all go into company productivity.



Improving the customer satisfaction through quality products & service & retain clients & generate repeat revenue.



Introduce new products to make more and more customers

COMPANY STRENGTH

Experience of 25+ Years



Team of 520 peoples



Wide range of Products



Long Term Contracts



Accredited by ISO



Leader in Industry



International Service provider



3,00,000 Sqmt Production/year



OFFICE & PEOPLE

Best place to work

A positive work environment makes employees feel good about coming to work, and this provides the motivation to sustain them throughout the day. So, we have provided all modern amenities to let the employees for effective & Efficient work.

We believe in people

Behind every success & achievements there is a team of our talented, passionate and determined people. They are the best to create the best .

Company always organize many training & development sessions to enable our people to reach their full potential.

OUR PRODUCTS



PYRAMID ROYAL TENT



This exquisite expertly designed structure incorporates aesthetically pleasing internal features adding a touch of class creating an aura of strength and luxury all combining to provide the ultimate specification in aluminum and luxurious fabrics. Our professional design team will be with you every step of the way to ensure the project is a total success from start to finish.

PYRAMID-DOME TENT



Bait Al Nokhada offers Special tents with its own unique design with a size of 10m, 15m, 20m and 30m, 40m, 60m span width. This series uses modular-combination design which allows the tent length to be adjusted in 5m bays, and there is no limits for the length. Big tent is the most widely used tent series for events, weddings, parties, restaurants, warehouse for permanent usage, exhibitions.

PYRAMID TENT



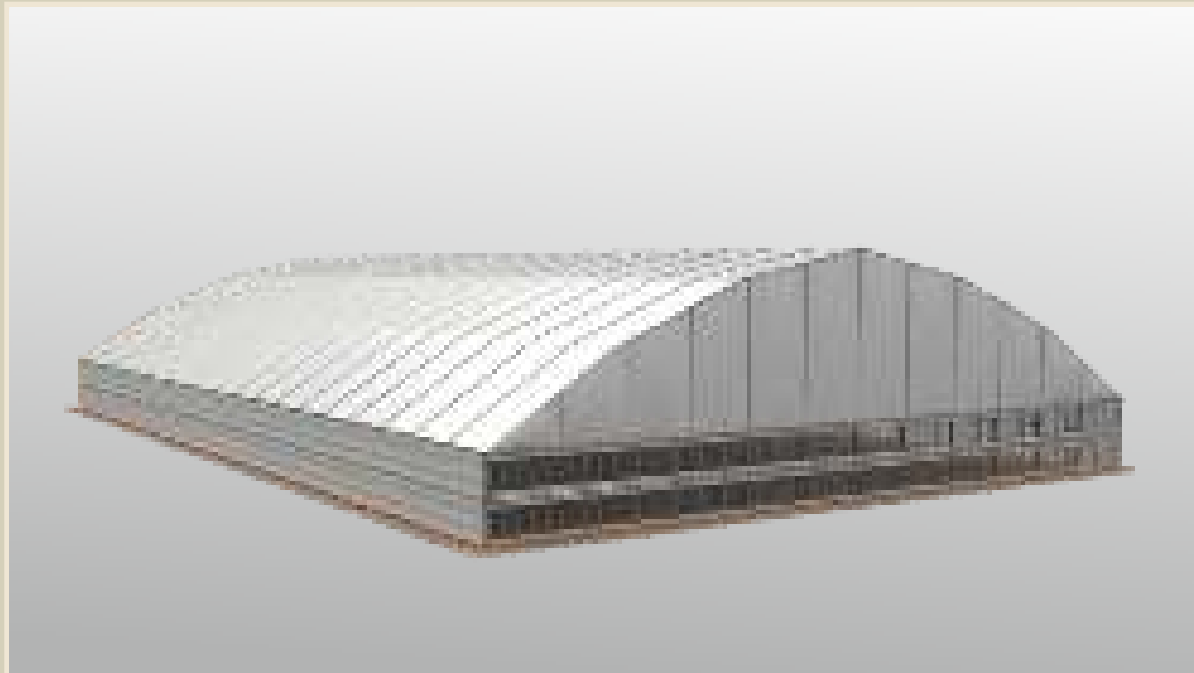
Pyramid tent is a high quality and modular designed tent in the market, which is made of strong and durable aluminum frames. It is easy to be installed and dismantled, and it's the best permanent and temporary solution for the logistics company to meet the needs of storage in the peak season.

CURVE TENT



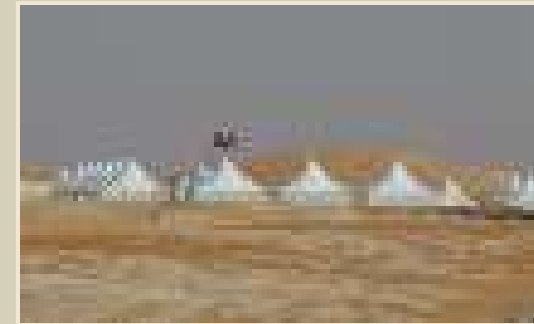
Curve tent is a modular structure with clear span, width up to 60 meters and length can be increased or decreased in 10m bay up to 60 meter. This is specially used for large events and permanent or temporary building.

POLYGON TENT



Bait Al Nokhada Can offer you Big tents as 10m, 20m and 30m, 40m, 60m span width. This series uses modular-combination design with big space inside. Big tent is the most widely used tent series for events, weddings, parties, restaurants, warehouse for permanent usage, exhibitions.

DOMES TENT



Dome tents are the first major evolution in the tent industry. Dome tent can be individually or collectively designed to give different geometrical shapes depending on the type of use, Can be used in exhibitions, events and all occasions. Dome tents are available with the size of 5m, 10m & 15m. This tent is available in variety designs such as pyramidal square, rectangular, Dome and Cone Shape.

REVOLUTION TENT



REVOLUTION TENT

by Bait Al Nokhada has a constant internal height of 7m/9m & can interchange its range of glass panels, deluxe push bar door system and individual aluminum louvered ventilation panels on two standard levels. In addition, it is possible to specify mezzanine floor sections internally, again based on a 5mx5m grid.

IDEAL FOR ALL STORAGE AND SPACE PROBLEMS

The tightness of the engineered roof system means that the risk of wind chatter from roof sails has been eliminated further enhancing its appeal for storage and all space needs.

PANORAMIC PAVILION TENT



Panoramic Pavilion tent is aluminum structure with the comfort of a permanent building and flexibility of a tent. It's a round tent with a high peak roof designs. Clear span width has a wide range from 10m - 50m. It offers excellent facilities for exclusive promotion tours, hospitality function or exhibitions, it's suitable for every event.

ARABIC TENT



We are masters in the construction of Arabian tents, such as Arabian Royal, Arabian VIP and Traditional Bedouin Tents. We provide exotic interiors and settings in these tents which reflects the rich and ancient traditions of Arabia. We install the best quality of industrial goat hair without any connections by using a German Machine and a layer of PVC provide water proofing, fire resistant.

CAR PARKING SHADES



Bait Al Nokhada offers the most modern car parking shade designs. We are using the latest technology and highly sophisticated machineries for the design, manufacture and erection of fabric shades and Steel structures for a high strength & sharp finish.

TENSILE SHADE STRUCTURE



Tensile Shade structure is an innovative creation by architects for Exciting designs & creativity in shades. We are specialized in designing, engineering, manufacturing, and installation of all kinds of Tensile Structures with high quality fabric & high strength steel structure.

BAIT AL NOKHADA PROJECTS

PYRAMID ROYAL TENT



PYRAMID ROYAL TENT



PYRAMID ROYAL TENT



PYRAMID ROYAL TENT



PYRAMID-DOME TENT



PYRAMID-DOME TENT



PYRAMID-DOME TENT



PYRAMID-DOME TENT



PYRAMID-DOME TENT



PYRAMID-DOME TENT



PYRAMID-DOME TENT



PYRAMID-DOME TENT



PYRAMID-DOME TENT



PYRAMID-DOME TENT



PYRAMID-DOME TENT



PYRAMID-DOME TENT



PYRAMID TENT



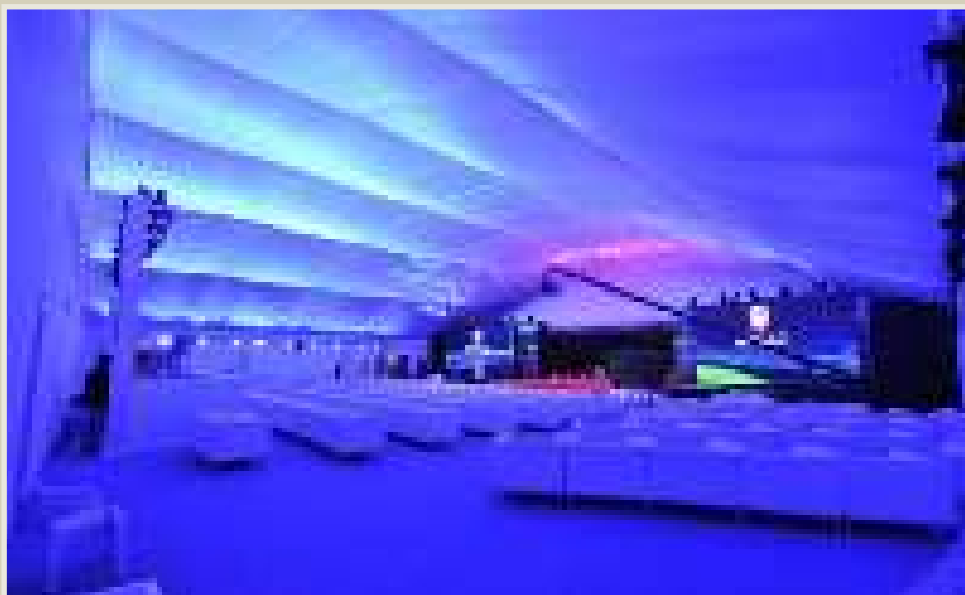
PYRAMID TENT



PYRAMID TENT



PYRAMID TENT



PYRAMID TENT



PYRAMID TENT



PYRAMID TENT



PYRAMID TENT



PYRAMID TENT



PYRAMID TENT



PYRAMID TENT



PYRAMID TENT



ARCH ROYAL TENT



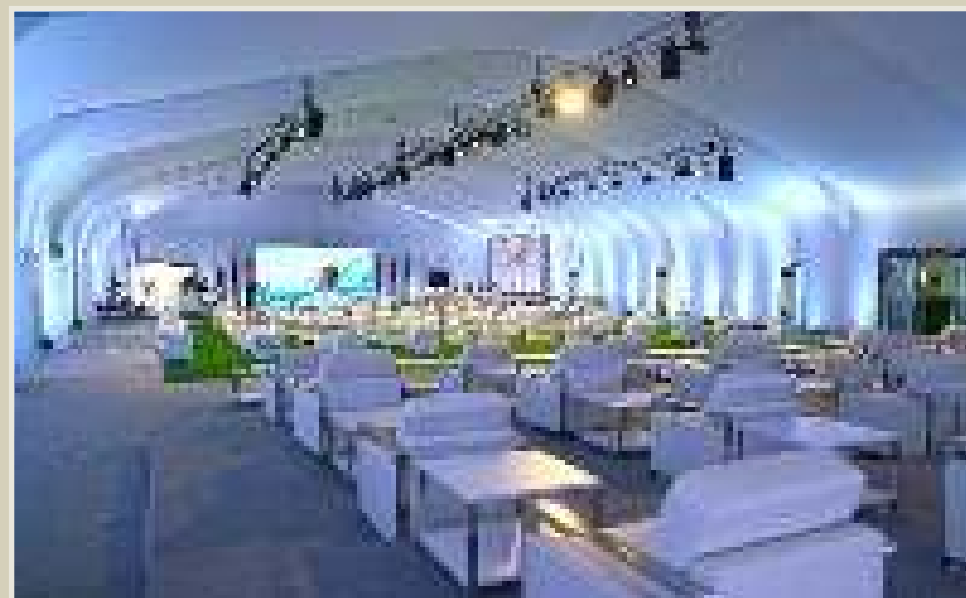
ARCH ROYAL TENT



ARCH TENT



ARCH TENT



ARCH TENT



ARCH TENT



POLYGON TENT



POLYGON TENT



BAIT AL NOKHADA PROJECTS



DOME TENT



DOMESTIC TENT



DOVE TENT



DOME TENT



DOME TENT



REVOLUTION TENT



REVOLUTION TENT



REVOLUTION TENT



REVOLUTION TENT



REVOLUTION TENT



REVOLUTION TENT



REVOLUTION TENT



REVOLUTION TENT



PANORAMIC PAVILION TENT



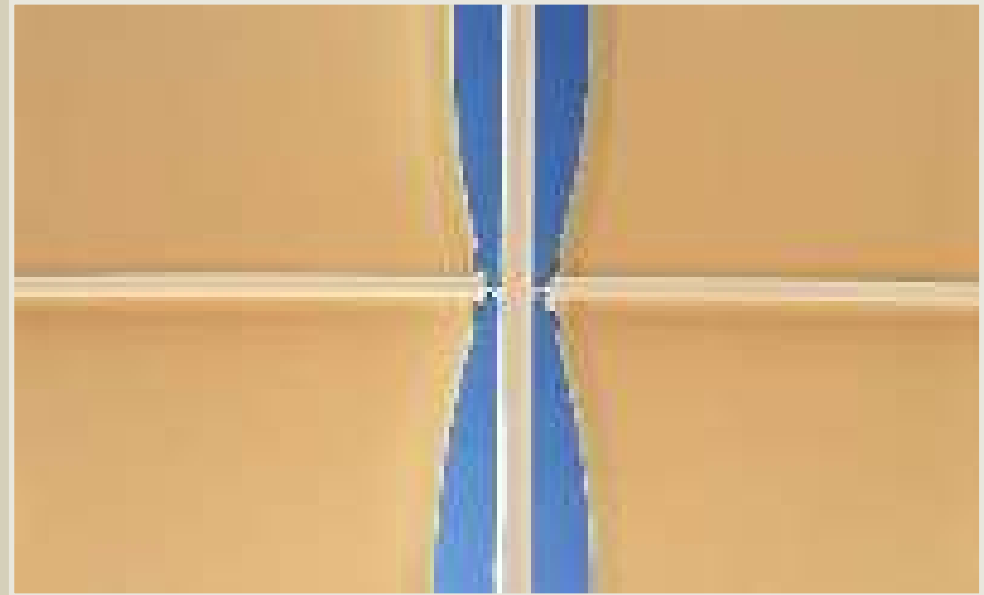
PANORAMIC PAVILION TENT



CAR PARKING SHADE



CAR PARKING SHADE



TENSILE SHADE STRUCTURE



TENSILE SHADE STRUCTURE



ARABIC TENT



ARABIC TENT



ARABIC TENT



ARABIC TENT



ARABIC TENT



ARABIC TENT



TENSILE SHADE STRUCTURE



TENSILE SHADE STRUCTURE



BAIT AL NOKHADA CAPACITY



FORSSTROM PVC WELDING TG-FLEX



FORSSTROM PVC WELDING TG-FLEX

BAIT AL NOKHADA CAPACITY



S.M.R.E PVC WELDING MACHINE



GERBER CUTTING AND MARKING

BAIT AL NOKHADA CAPACITY



GERBER CUTTING AND MARKING



MILLER WELD MASTER KADER MAKING

BAIT AL NOKHADA CAPACITY



ABS THERMO FORMING MACHINE



HYDRAULIC SHEARING MACHINE (SAYES)

BAIT AL NOKHADA CAPACITY



ELUMATEC SBZ151



EMMEGI COMET

BAIT AL NOKHADA CAPACITY



ACCUTECH LATHE



HEADMAN CNC LATHE

BAIT AL NOKHADA CAPACITY



HEADMAN CNC MILLING



MILLING & DRILLING

BAIT AL NOKHADA CAPACITY



LATHE MILL COMBO



PULL BENDING MACHINE

BAIT AL NOKHADA CAPACITY



RADIAL DRILL (SAYES)



CNC ROUTER

BAIT AL NOKHADA CAPACITY



BAND SAW CUTTING



BAND SAW CUTTING

APPRECIATION CERTIFICATE



APPRECIATION CERTIFICATE



APPRECIATION CERTIFICATE



APPRECIATION CERTIFICATE



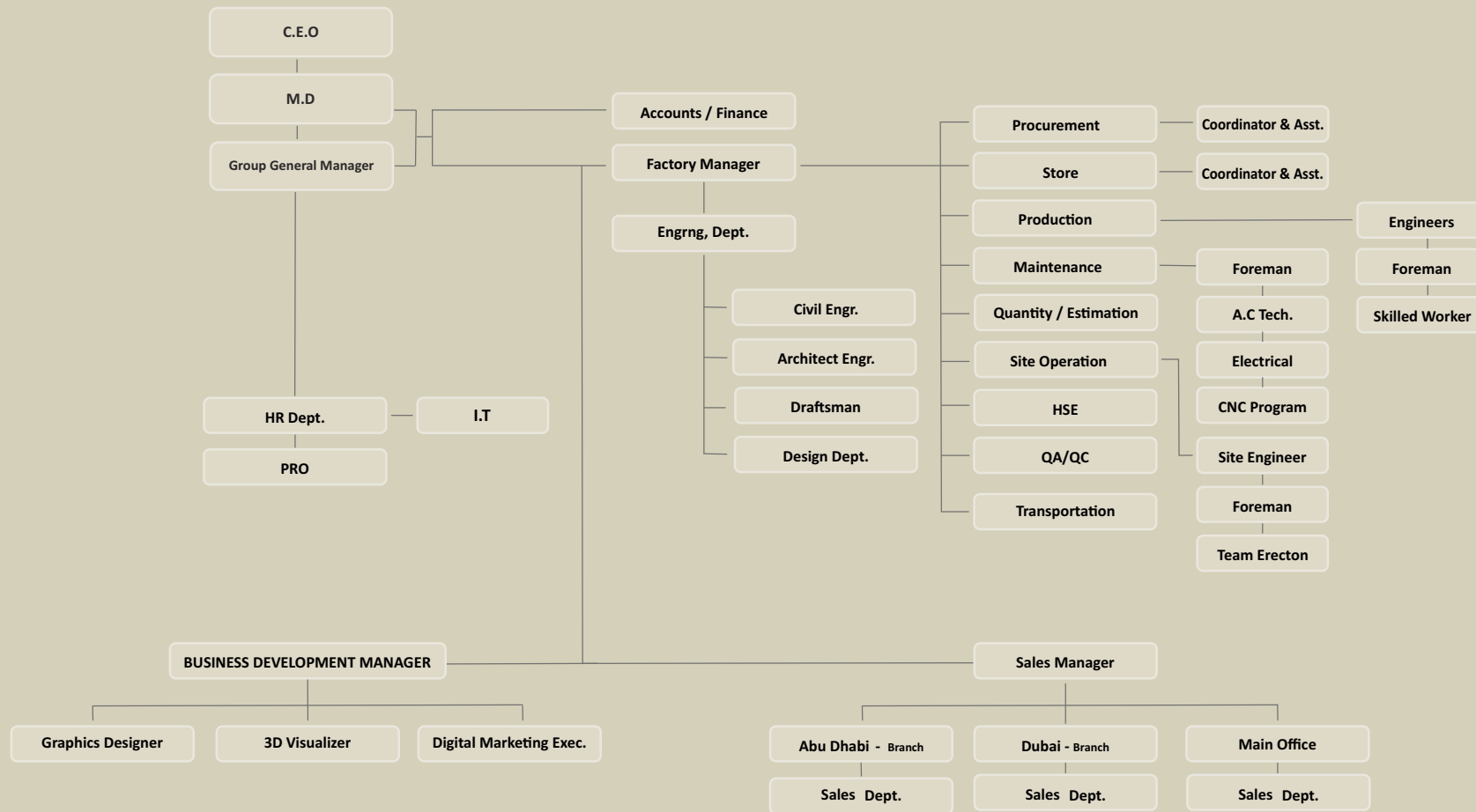
APPRECIATION CERTIFICATE



APPRECIATION CERTIFICATE



ORGANIZATION CHART



LOCATION MAP





H.O. ICAD 1, Musaffah, Abu Dhabi, UAE.
Tel: +971 2 555 (8368) TENT, P.O.Box. 38824
Factory Tel: +971 2 554 5580, Fax: +971 2 554 5582

ABU DHABI

Tel : +971 2 445 4225
Fax: +971 2 554 5582

DUBAI

Tel : +971 4 344 4091
Fax: +971 4 251 6679

info@baitalnokhada.com www.baitalnokhada.com



Google Map